



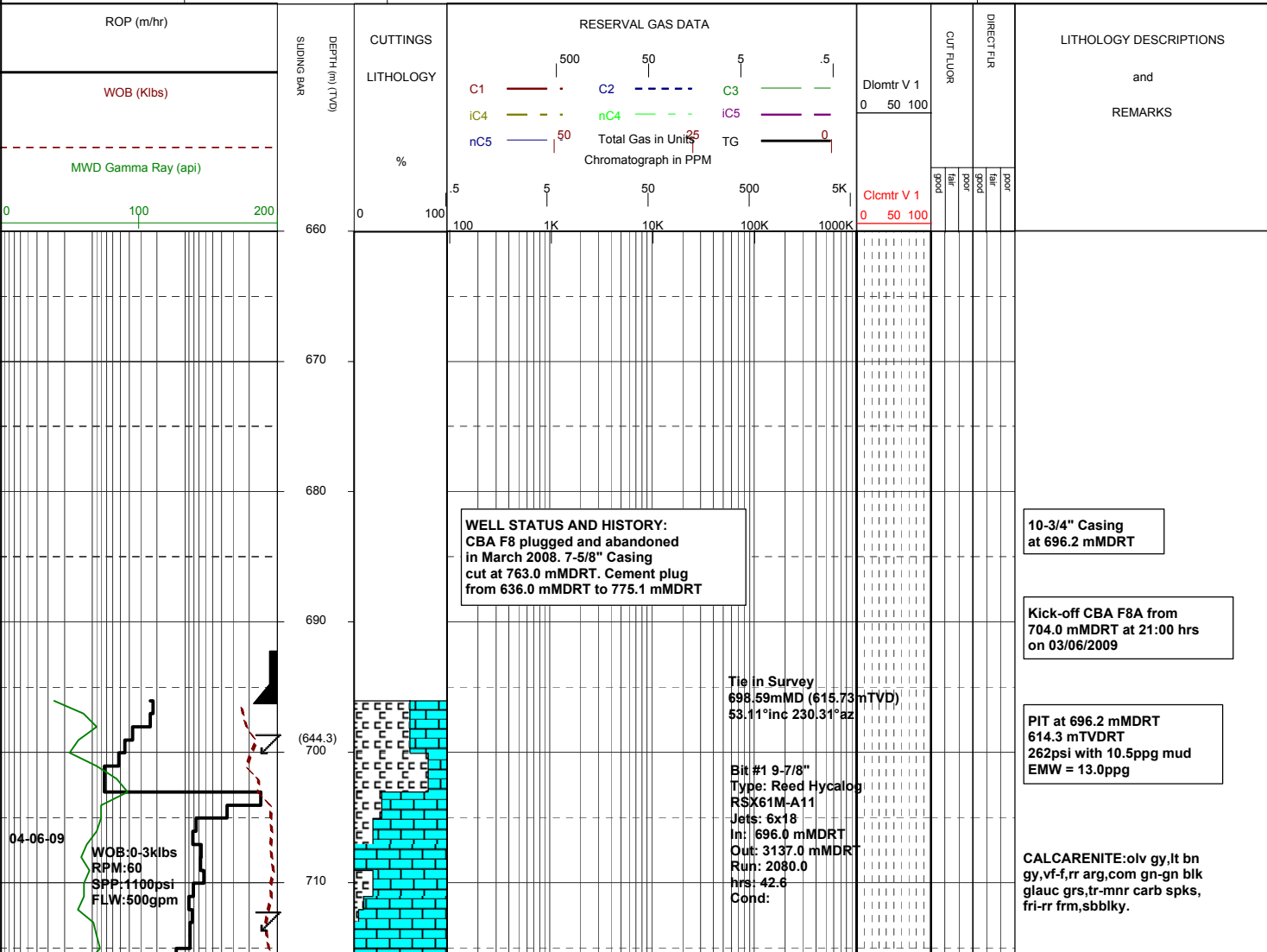
MASTERLOG

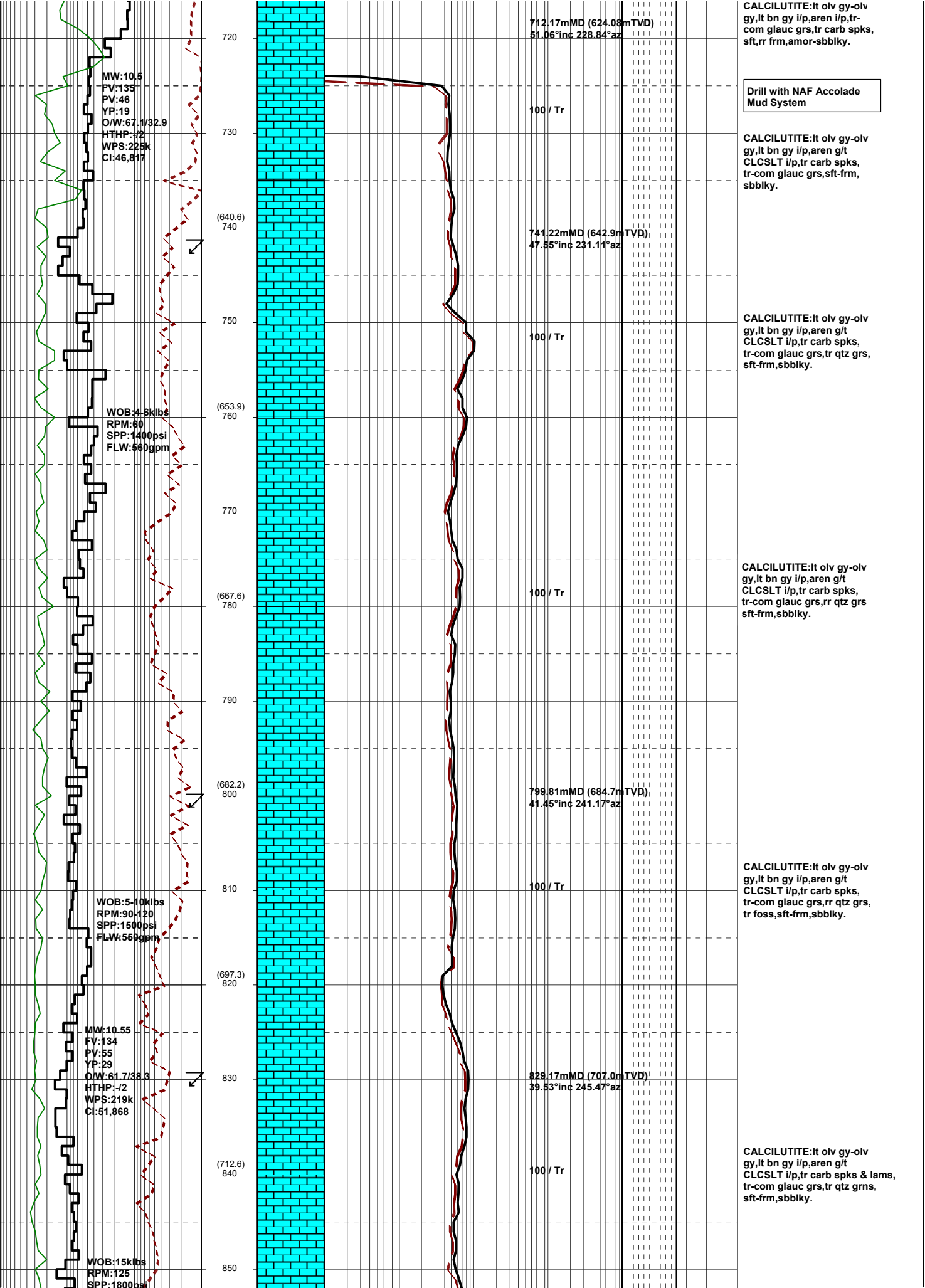
Cobia F8A



GENERAL	SURFACE POSITION	HOLE / CASING INFO	DATE / DEPTH	ENGINEERS
Country : AUSTRALIA	Longitude : 148°18'32.473" E		Kick off Date: 03/06/2009	Mark Smith
Permit : VIC / L5	Latitude : 38°26'57.529" S	9-7/8" Hole to 3137.0 mMDRT	Total Depth Date: 07/06/2009	Phil Rady
Field : FTA / HLA	MGA Co-ord X : 614226.00 mE		Total Depth: 3137.00m MDRT	Colin Chadwick
Basin : GIPPSLAND	MGA Co-ord Y : 5743519.34 mN	10-3/4" Surface Csg at 696.2 mMDRT	True Vertical Depth: 2468.95m TVDRT	Phil Rady
Well Type : DEVELOPMENT	RT to MSL : 41.0 m	7" Production Csg at	Log Scale : 1/ 500	Leigh Dowler
Rig Name : Nabors 175	RT to Sea Bed : 120.0 m			Kepa O'Reilly

ABBREVIATIONS		LITHOLOGY LEGEND				ENGINEERING LEGEND			
MW	Mud Weight	WOB	Weight on Bit (Klbs)	Claystone	Marl	Bryozoa	Glauconite	Casing shoe	RFT
FV	Funnel Viscosity	RPM	Rotations Per Min	Siltstone	Limestone	Radiolariae	Pyrite	Casing Top	MDT
PV	Plastic Viscosity	FLW	Flow Rate (gpm)	Sandstone	Dolomite	Echinoids		Survey	Mud gain
YP	Yield Point	SPP	Pump Pressure (psi)	Shale	Coal-lignite	Foraminiferae		Sidewall core	Mud loss
O/W	Oil/Water Ratio	RR	Re-Run Bit	Conglomerate	Volcanics	Cement		Core	Sliding Bar
WPS	Aq. Phase Salinity	TG	Trip Gas						
HPHT	Fluid Loss	CG	Connection Gas						
Cl	Chlorides	BG	Background Gas						
Incl	Inclination	DGP	Drilled Gas Peak						
Az	Azimuth	MM	Mud Motor						





MW:10.5
 FV:135
 PV:46
 YP:19
 O/W:67.1/32.9
 HTHP:-/2
 WPS:225k
 CI:46.817

WOB:4.5klbs
 RPM:60
 SPP:1400psi
 FLW:560gpm

WOB:5-10klbs
 RPM:90-120
 SPP:1500psi
 FLW:560gpm

MW:10.55
 FV:134
 PV:55
 YP:29
 O/W:61.7/38.3
 HTHP:-/2
 WPS:219k
 CI:51.868

WOB:15klbs
 RPM:125
 SPP:1800psi

712.17mMD (624.08mTVD)
 51.06°inc 228.84°az

741.22mMD (642.9mTVD)
 47.55°inc 231.11°az

799.81mMD (684.7mTVD)
 41.45°inc 241.17°az

829.17mMD (707.0mTVD)
 39.53°inc 245.47°az

Drill with NAF Accolade
 Mud System

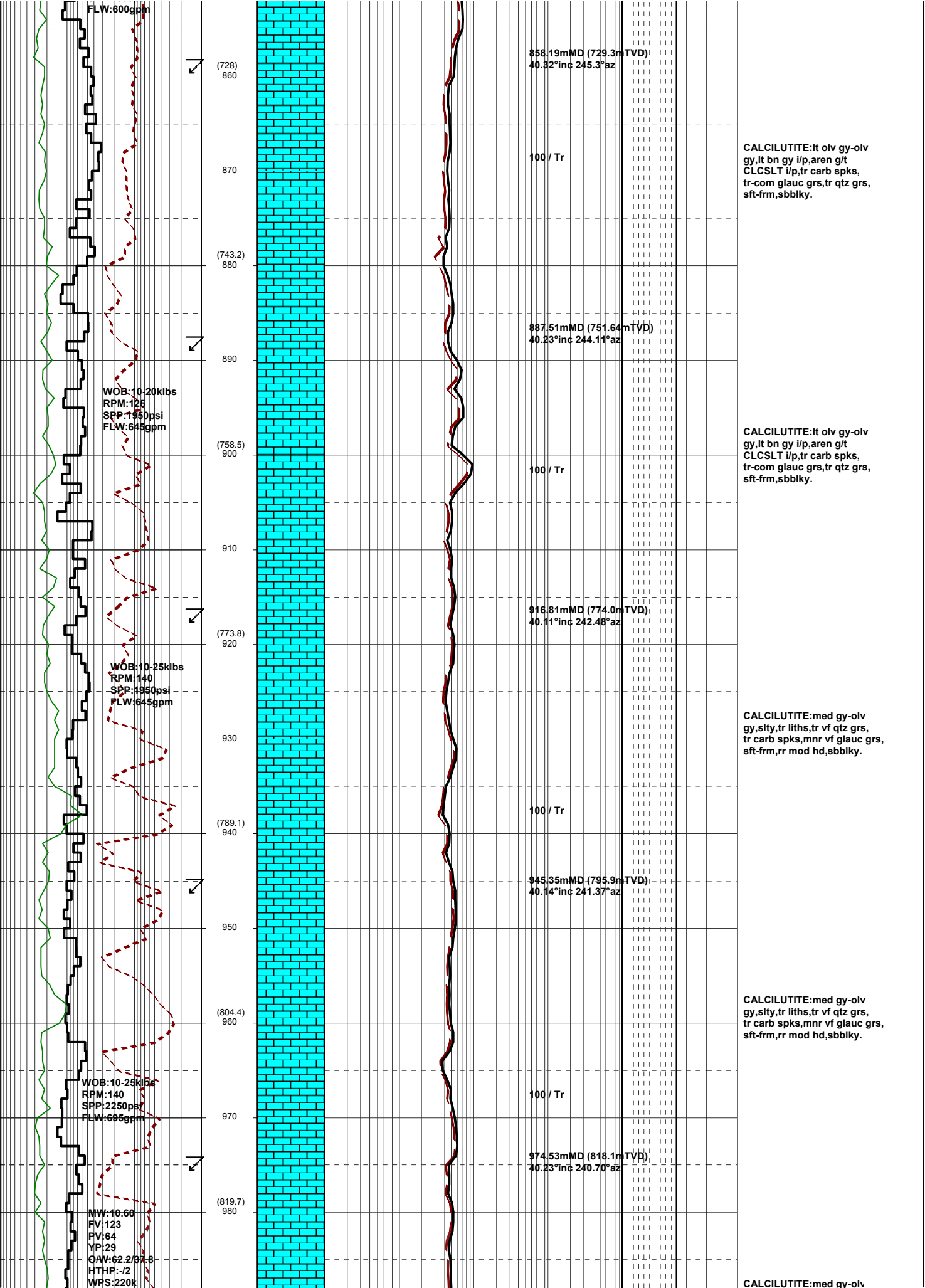
CALCILUTITE:It olv gy-olv
 gy,It bn gy i/p,aren g/t
 CLCSLT i/p,tr carb spks,
 tr-com glauc grs,sft-frm,
 sbbkly.

CALCILUTITE:It olv gy-olv
 gy,It bn gy i/p,aren g/t
 CLCSLT i/p,tr carb spks,
 tr-com glauc grs,rr qtz grs,
 sft-frm,sbbkly.

CALCILUTITE:It olv gy-olv
 gy,It bn gy i/p,aren g/t
 CLCSLT i/p,tr carb spks,
 tr-com glauc grs,rr qtz grs
 sft-frm,sbbkly.

CALCILUTITE:It olv gy-olv
 gy,It bn gy i/p,aren g/t
 CLCSLT i/p,tr carb spks,
 tr-com glauc grs,rr qtz grs,
 tr foss,sft-frm,sbbkly.

CALCILUTITE:It olv gy-olv
 gy,It bn gy i/p,aren g/t
 CLCSLT i/p,tr carb spks & lams,
 tr-com glauc grs,rr qtz grms,
 sft-frm,sbbkly.



FLW:600gpm

(728)
860

858.19mMD (729.3m TVD)
40.32°inc 245.3°az

870

100 / Tr

CALCILUTITE:lt olv gy-olv gy,lt bn gy i/p,aren g/t CLCSLT i/p,tr carb spks, tr-com glauc grs,tr qtz grs, sft-frm,sbbiky.

(743.2)
880

887.51mMD (751.64m TVD)
40.23°inc 244.11°az

890

WOB:10-20klbs
RPM:125
SPP:1950psi
FLW:645gpm

100 / Tr

CALCILUTITE:lt olv gy-olv gy,lt bn gy i/p,aren g/t CLCSLT i/p,tr carb spks, tr-com glauc grs,tr qtz grs, sft-frm,sbbiky.

(758.5)
900

910

916.81mMD (774.0m TVD)
40.11°inc 242.48°az

(773.8)
920

WOB:10-25klbs
RPM:140
SPP:1950psi
FLW:645gpm

100 / Tr

CALCILUTITE:med gy-olv gy,sly,tr liths,tr vf qtz grs, tr carb spks,mnr vf glauc grs, sft-frm,rr mod hd,sbbiky.

(789.1)
940

945.35mMD (795.9m TVD)
40.14°inc 241.37°az

950

(804.4)
960

100 / Tr

CALCILUTITE:med gy-olv gy,sly,tr liths,tr vf qtz grs, tr carb spks,mnr vf glauc grs, sft-frm,rr mod hd,sbbiky.

WOB:10-25klbs
RPM:140
SPP:2250psi
FLW:695gpm

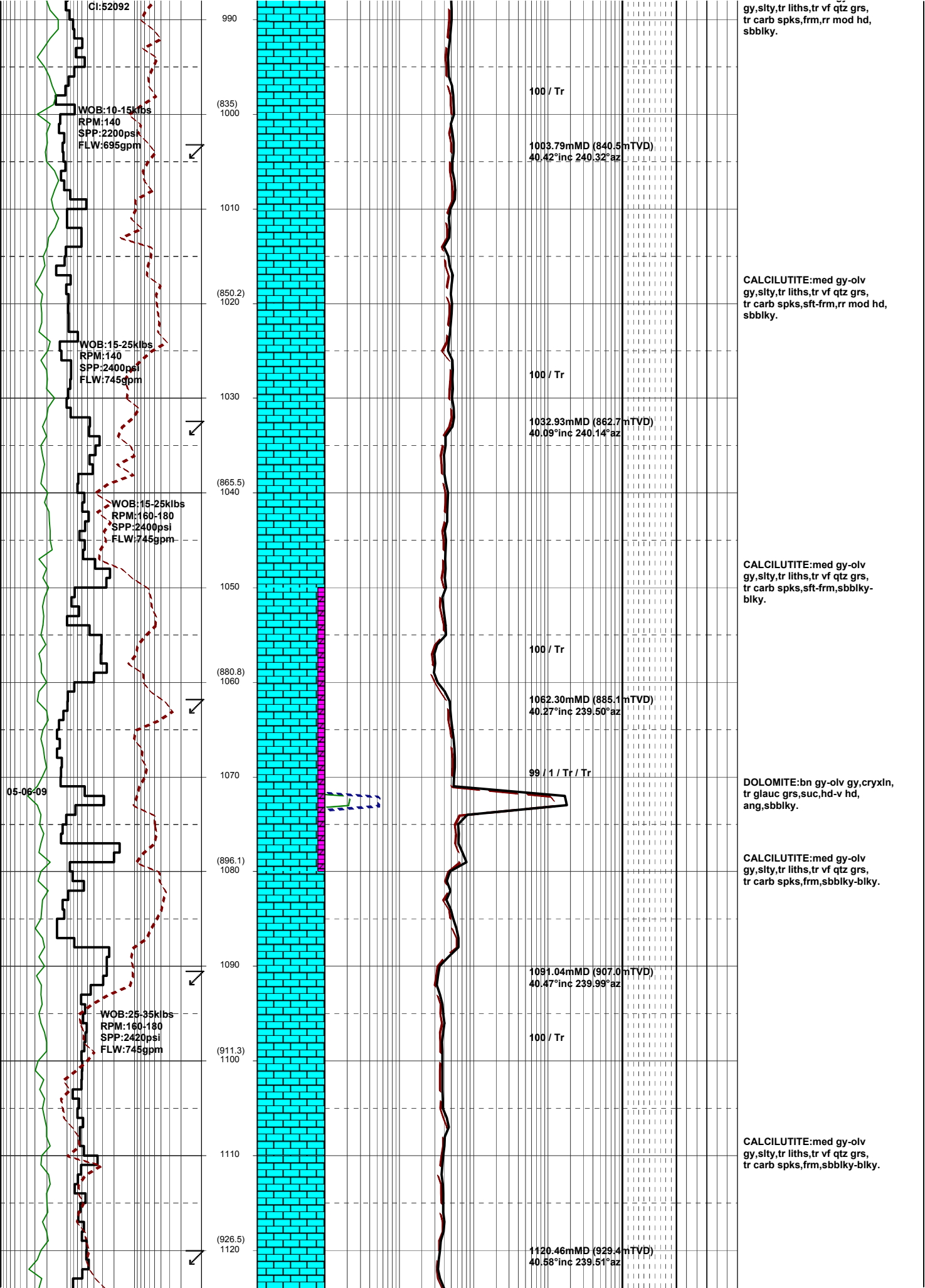
970

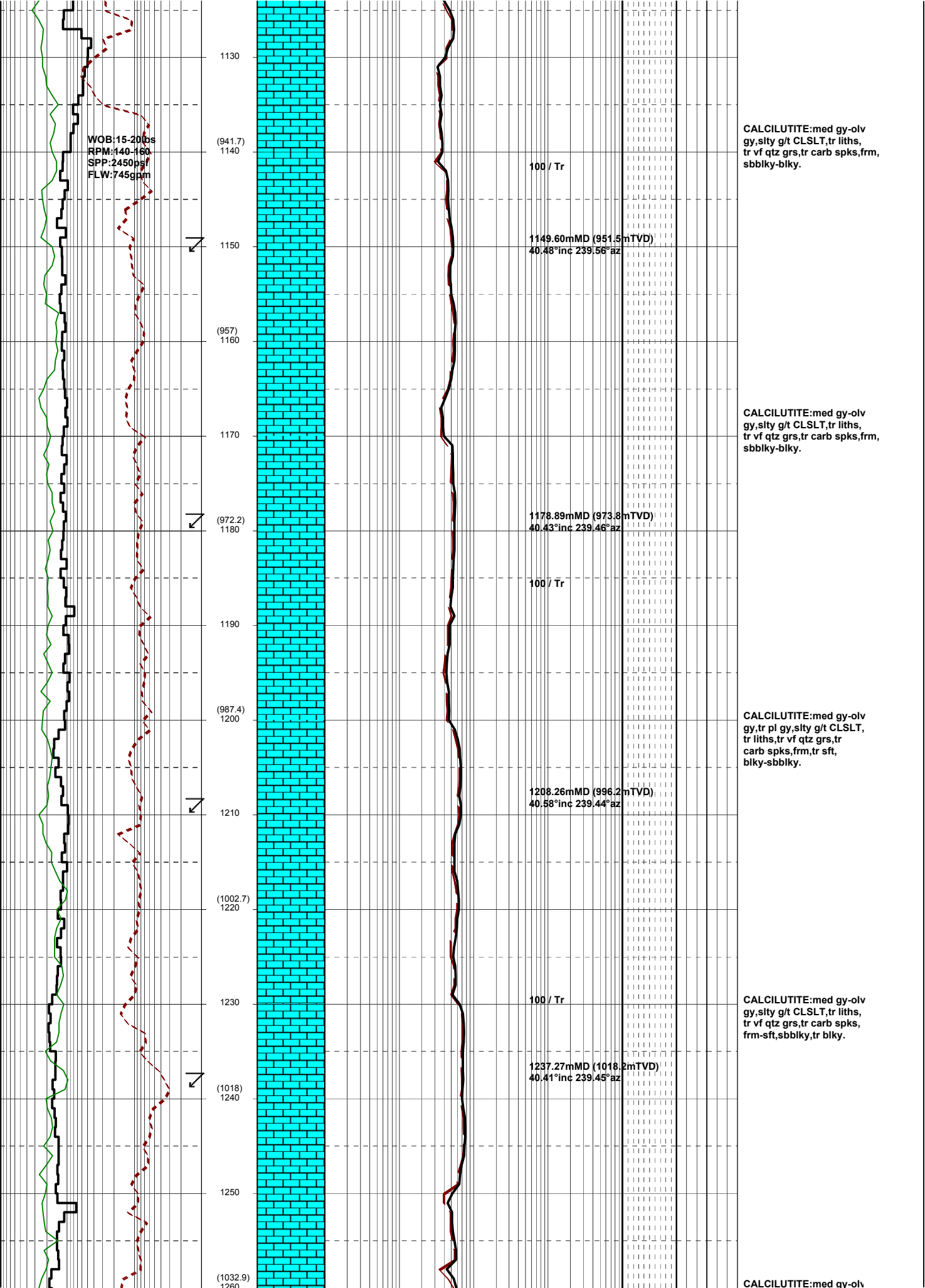
974.53mMD (818.1m TVD)
40.23°inc 240.70°az

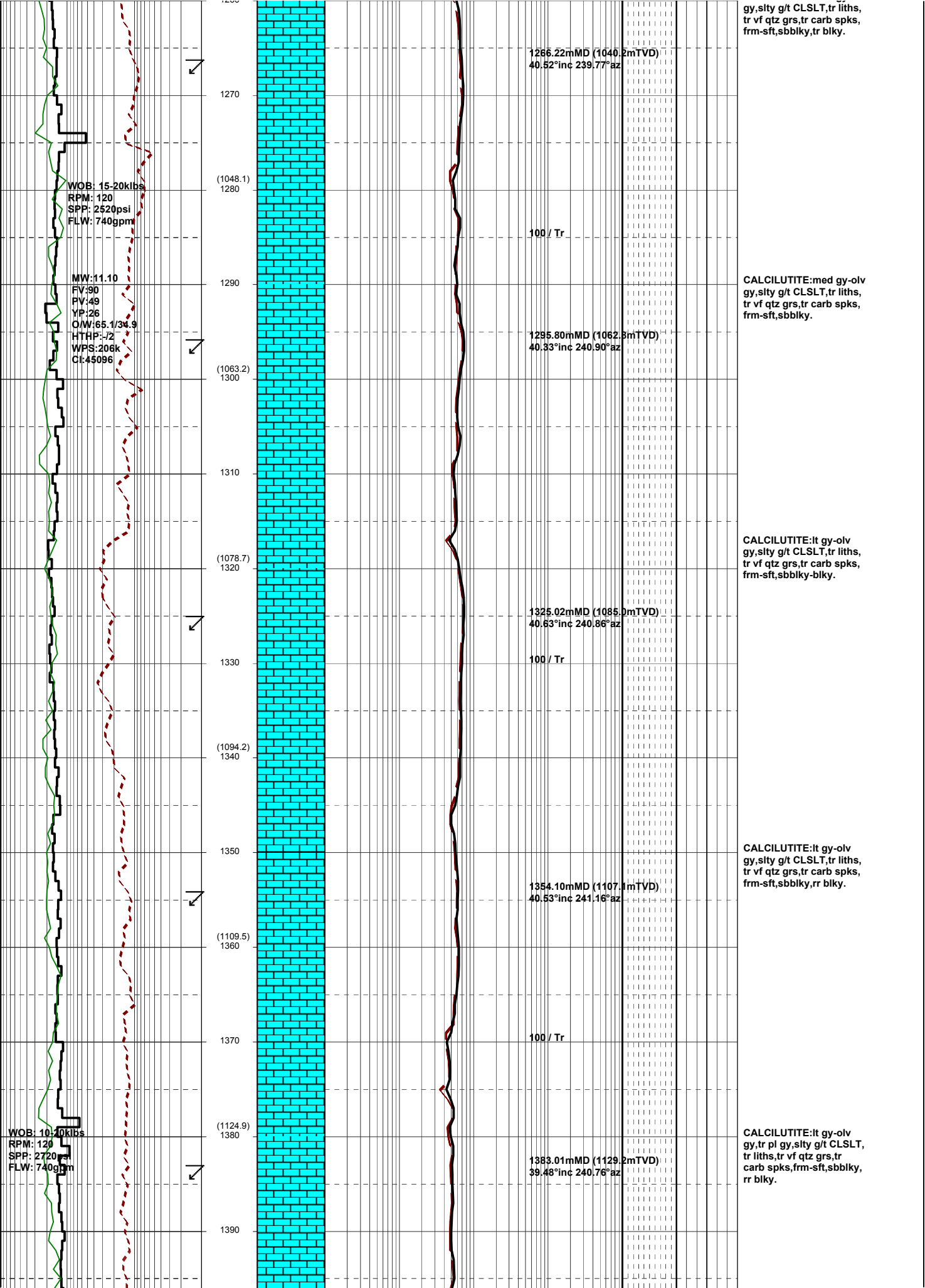
(819.7)
980

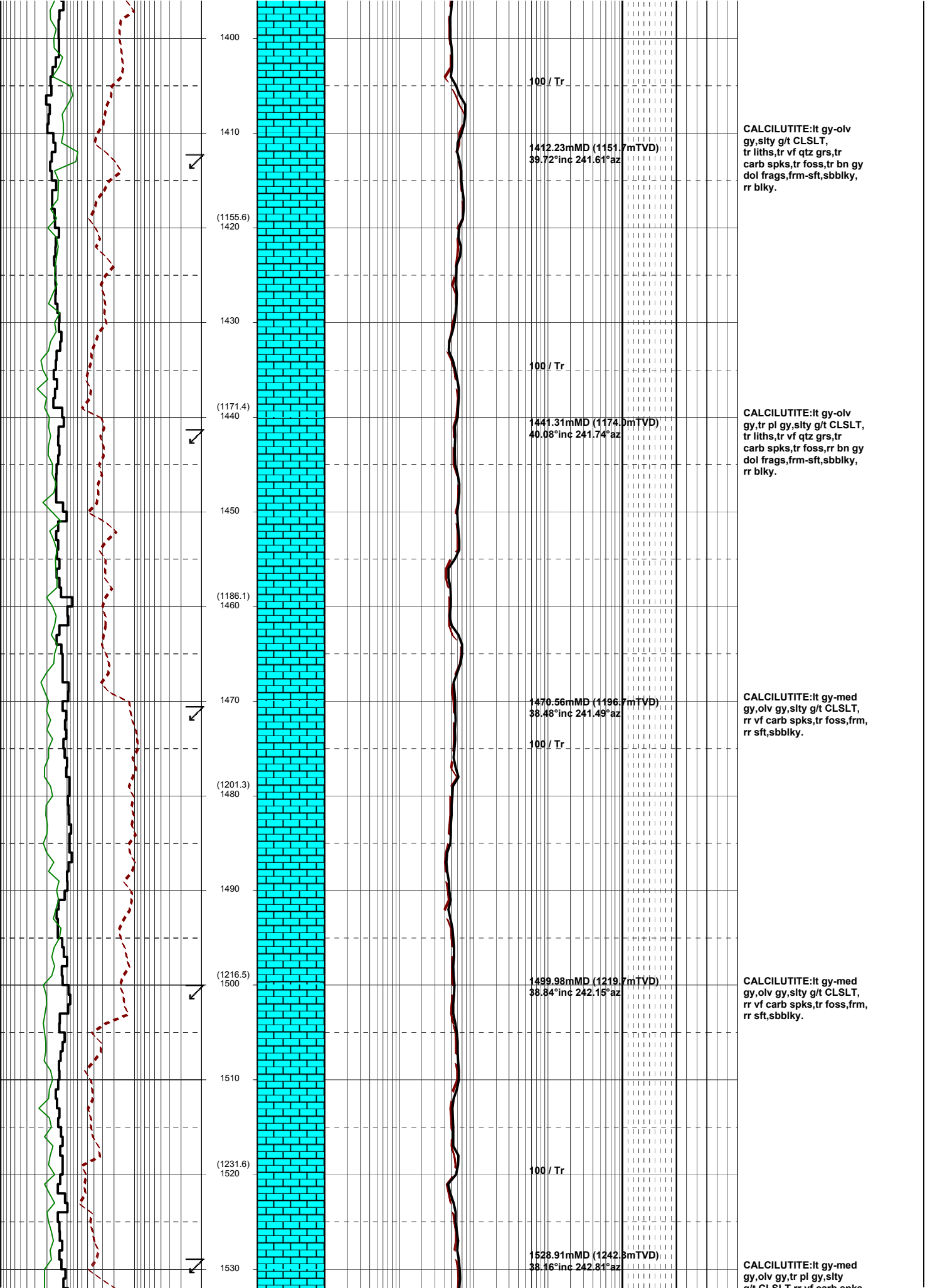
MW:10-60
FV:123
PV:64
YP:29
OAV:62.2/37.8
HTHP:-J2
WPS:220k

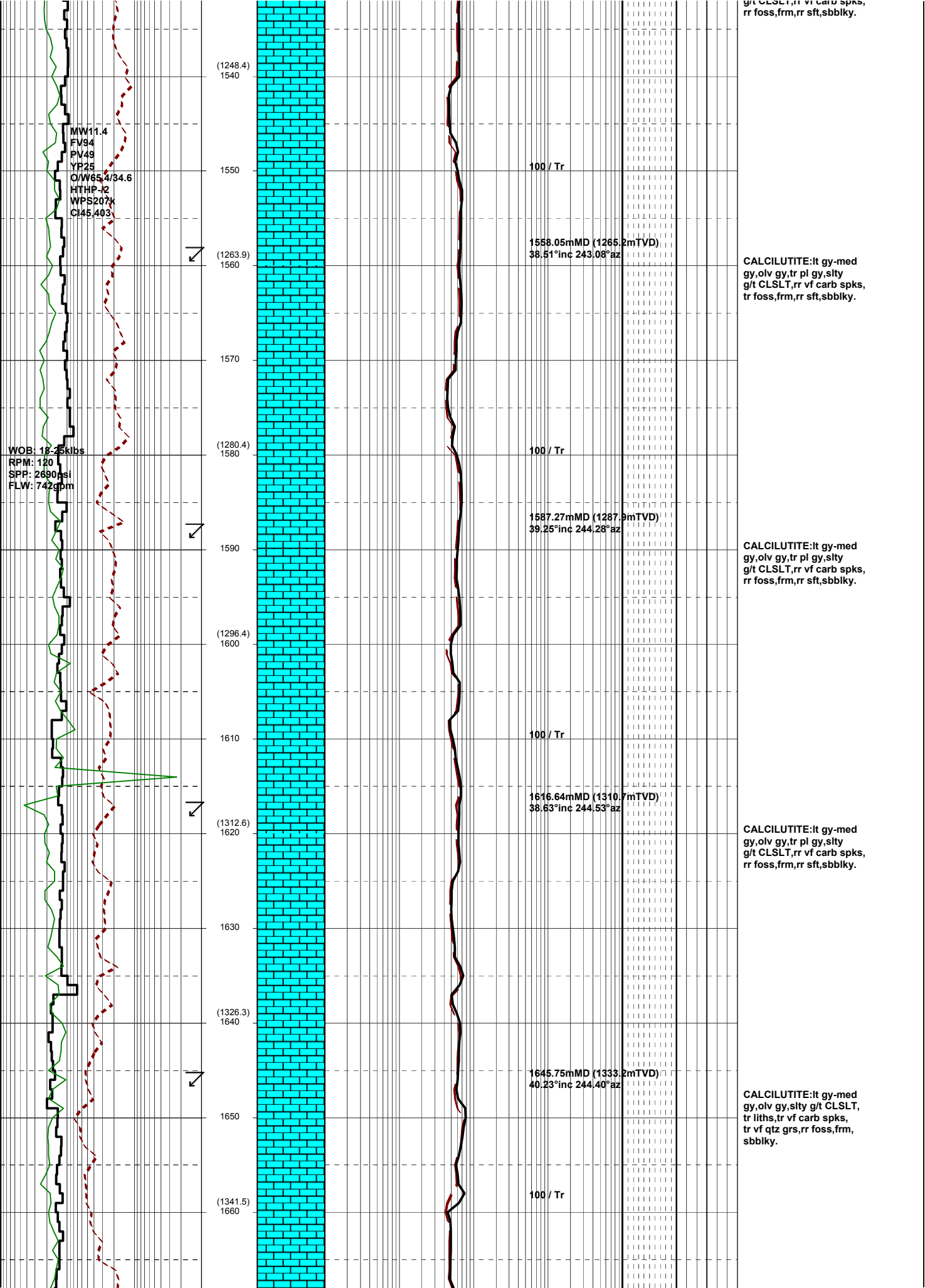
CALCILUTITE:med gy-olv











MW11.4
 FV94
 PV49
 YP25
 O/W65.4/34.6
 HTHP-J2
 WPS207k
 CI45.403

WOB: 18.25kibs
 RPM: 120
 SPP: 2690psi
 FLW: 742gpm

(1248.4)
1540
1550
(1263.9)
1560
1570
(1280.4)
1580
1590
(1296.4)
1600
1610
(1312.6)
1620
1630
(1326.3)
1640
1650
(1341.5)
1660

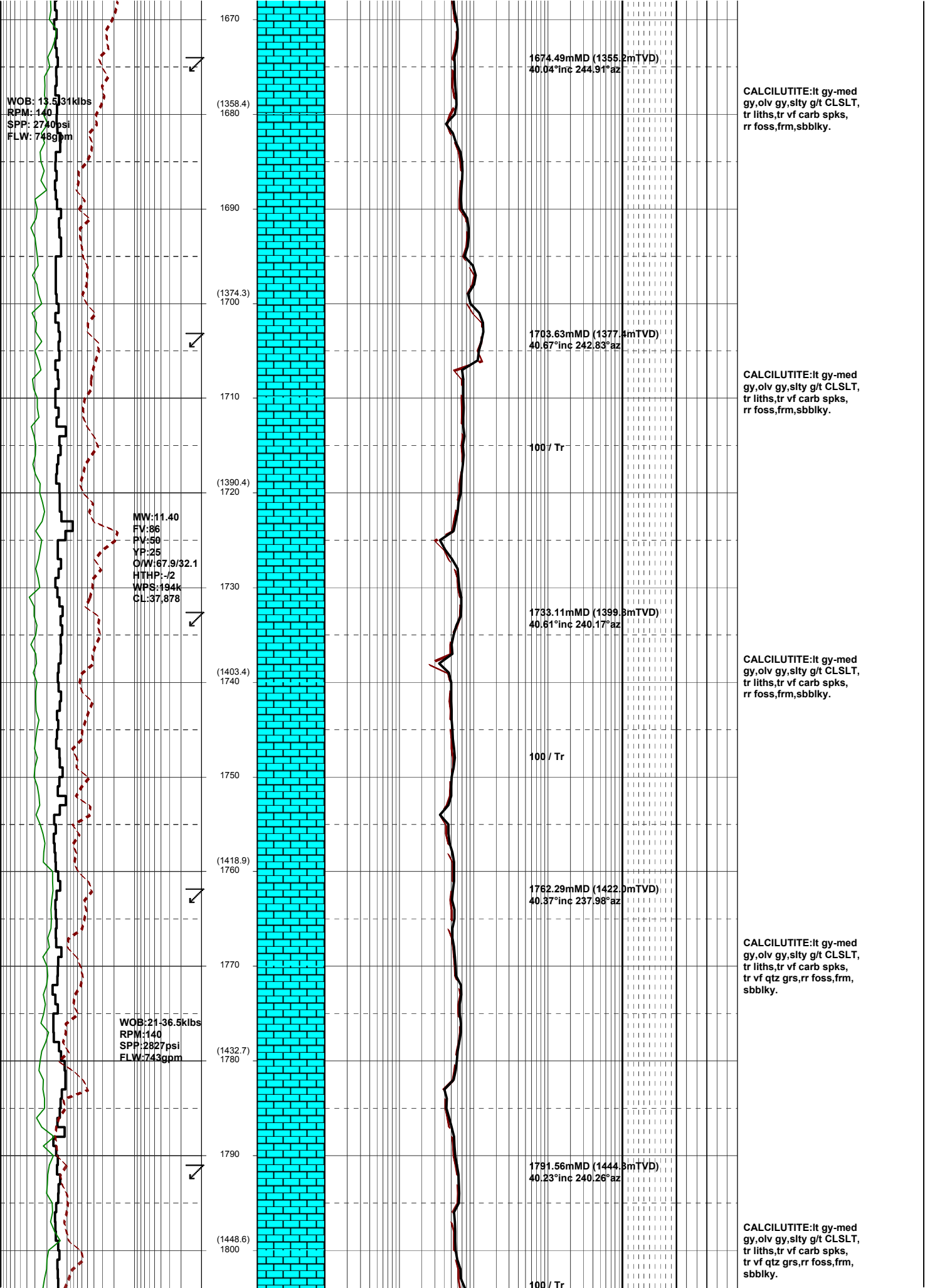
100 / Tr
 1558.05mMD (1265.2mTVD)
 38.51°inc 243.08°az
 100 / Tr
 1587.27mMD (1287.9mTVD)
 39.25°inc 244.28°az
 100 / Tr
 1616.64mMD (1310.7mTVD)
 38.63°inc 244.53°az
 100 / Tr
 1645.75mMD (1333.2mTVD)
 40.23°inc 244.40°az
 100 / Tr

CALCILUTITE:lt gy-med gy,olv gy,tr pl gy,silty g/t CLSLT,rr vf carb spks, rr foss,frm,rr sft,sbbiky.

CALCILUTITE:lt gy-med gy,olv gy,tr pl gy,silty g/t CLSLT,rr vf carb spks, rr foss,frm,rr sft,sbbiky.

CALCILUTITE:lt gy-med gy,olv gy,tr pl gy,silty g/t CLSLT,rr vf carb spks, rr foss,frm,rr sft,sbbiky.

CALCILUTITE:lt gy-med gy,olv gy,silty g/t CLSLT, tr liths,tr vf carb spks, tr vf qtz grs,rr foss,frm, sbbiky.



WOB: 13.531kbs
RPM: 140
SPP: 2740psi
FLW: 748gpm

MW: 11.40
FV: 86
PV: 50
YP: 25
O/W: 67.9/32.1
HTHP: -/2
WPS: 494k
CL: 37,878

WOB: 21-36.5kbs
RPM: 140
SPP: 2827psi
FLW: 743gpm

1670
(1358.4) 1680
1690
(1374.3) 1700
1710
(1390.4) 1720
1730
(1403.4) 1740
1750
(1418.9) 1760
1770
(1432.7) 1780
1790
(1448.6) 1800

1674.49mMD (1355.2mTVD)
40.04°inc 244.91°az

1703.63mMD (1377.4mTVD)
40.67°inc 242.83°az

1733.11mMD (1399.8mTVD)
40.61°inc 240.17°az

1762.29mMD (1422.0mTVD)
40.37°inc 237.98°az

1791.56mMD (1444.8mTVD)
40.23°inc 240.26°az

CALCILUTITE:lt gy-med
gy,olv gy,silty g/t CLSLT,
tr liths,tr vf carb spks,
rr foss,frm,sbbkly.

CALCILUTITE:lt gy-med
gy,olv gy,silty g/t CLSLT,
tr liths,tr vf carb spks,
rr foss,frm,sbbkly.

CALCILUTITE:lt gy-med
gy,olv gy,silty g/t CLSLT,
tr liths,tr vf carb spks,
rr foss,frm,sbbkly.

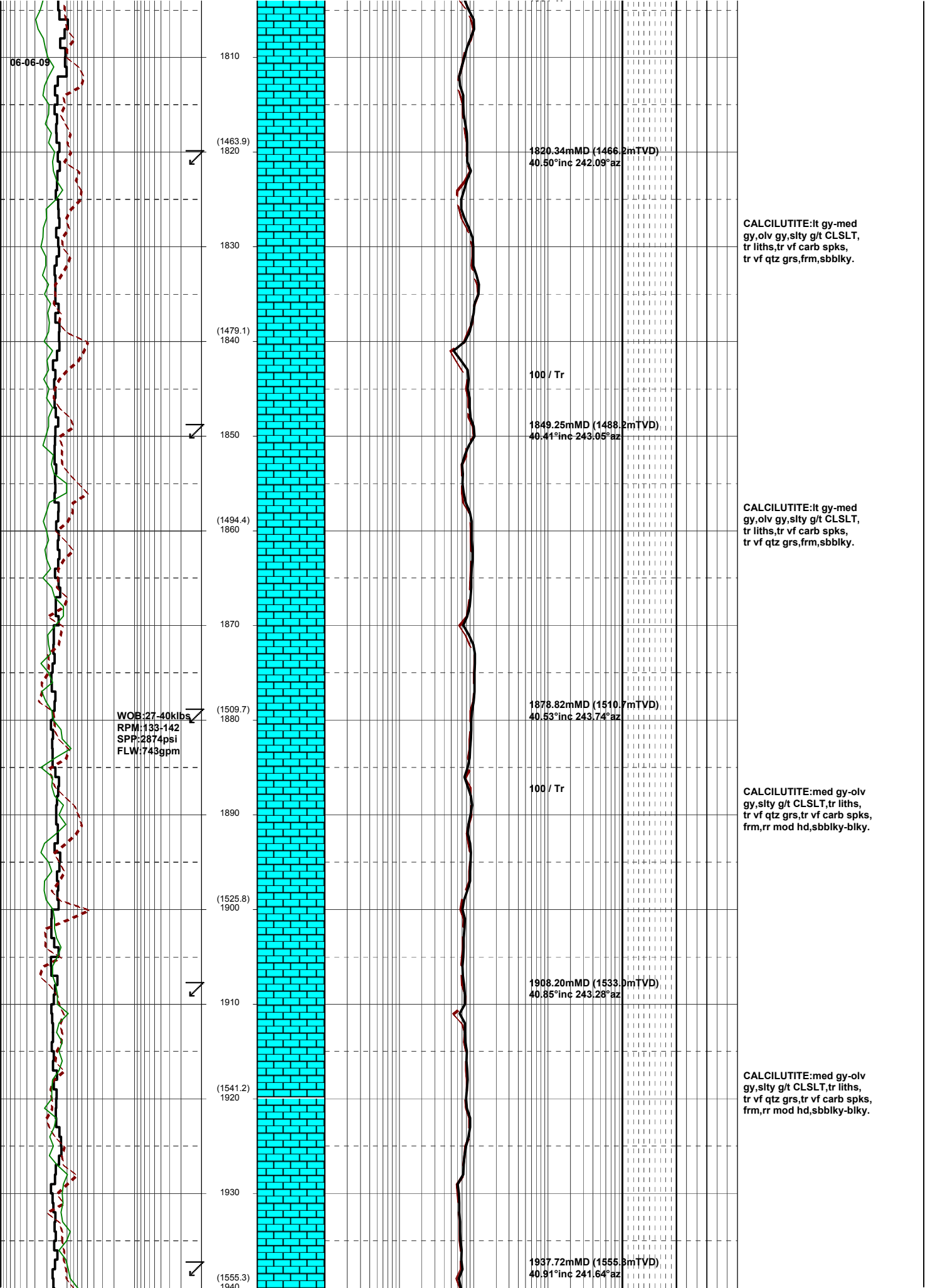
CALCILUTITE:lt gy-med
gy,olv gy,silty g/t CLSLT,
tr liths,tr vf carb spks,
tr vf qtz grs,rr foss,frm,
sbbkly.

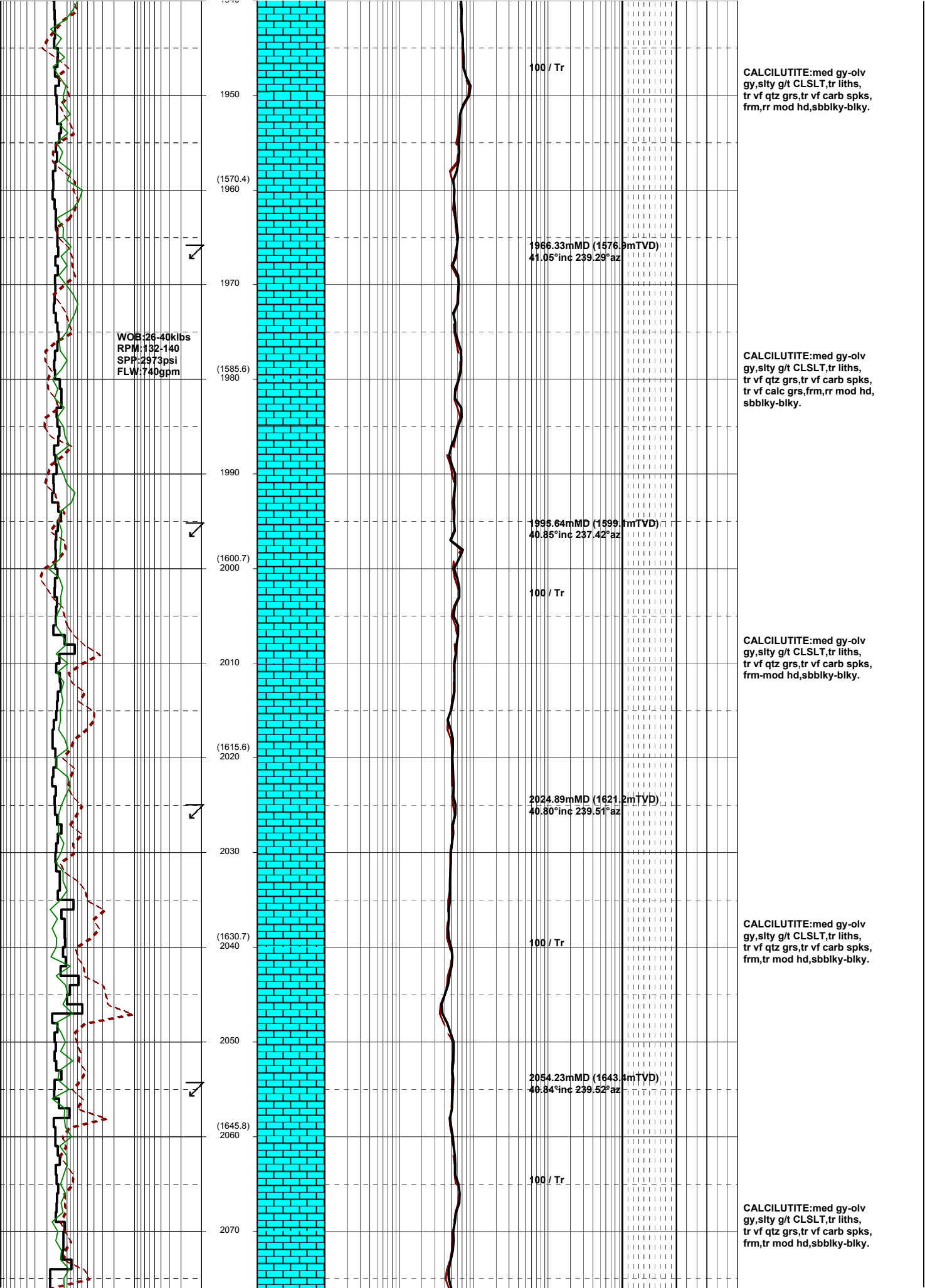
CALCILUTITE:lt gy-med
gy,olv gy,silty g/t CLSLT,
tr liths,tr vf carb spks,
tr vf qtz grs,rr foss,frm,
sbbkly.

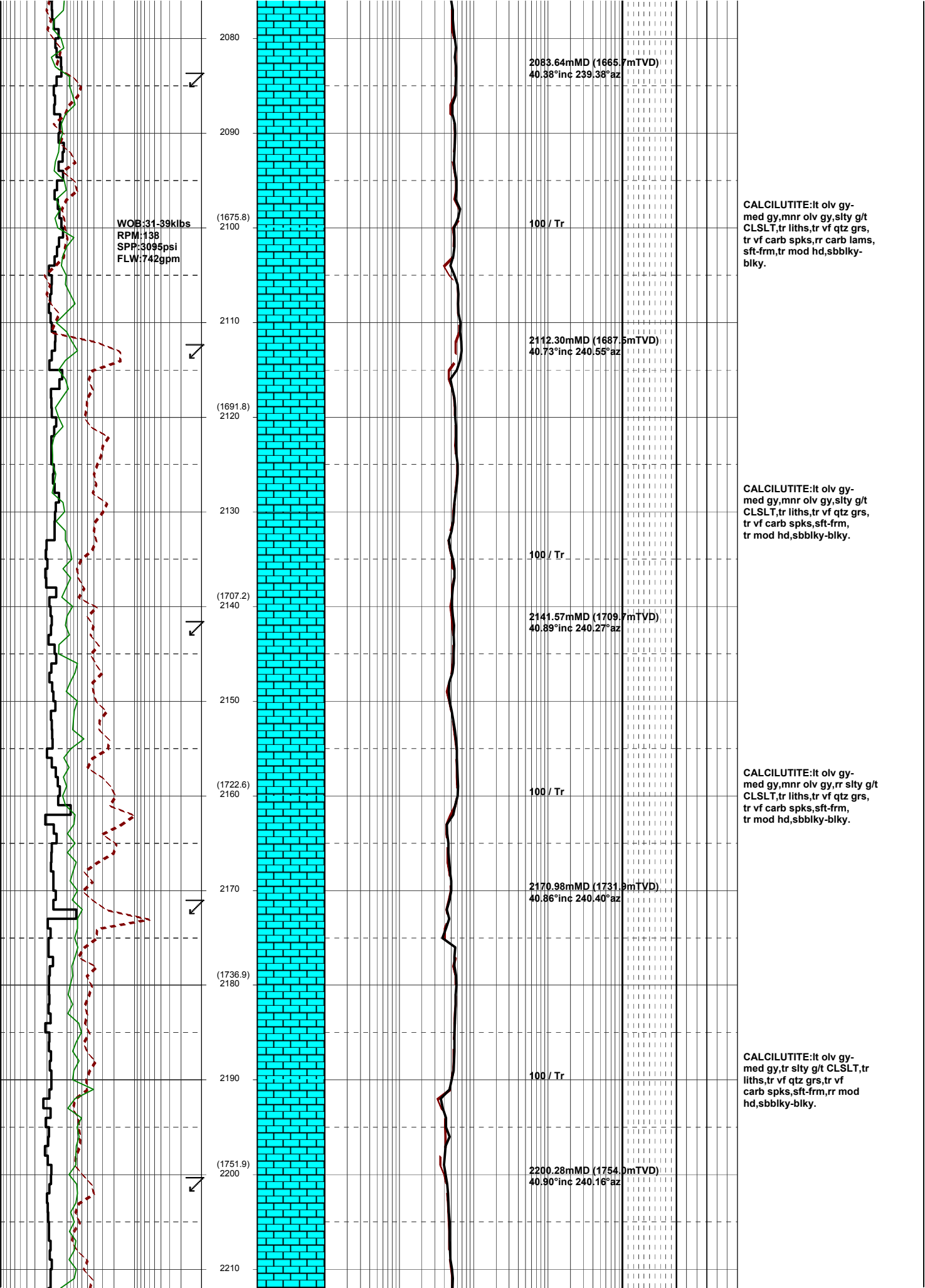
100 / Tr

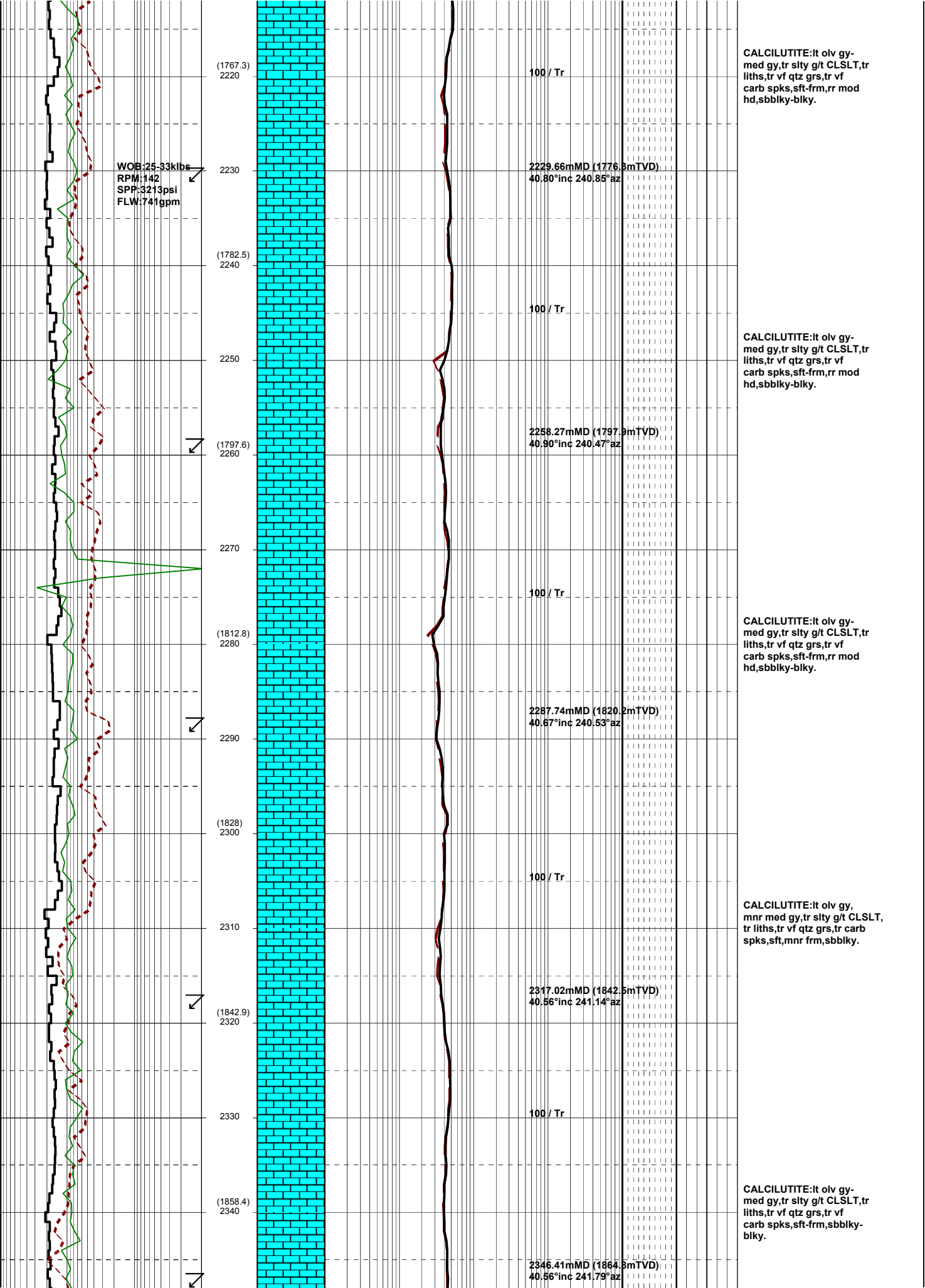
100 / Tr

100 / Tr









WOB: 25-33klbs
 RPM: 142
 SPP: 3213psi
 FLW: 741gpm

(1767.3) 2220
 (1782.5) 2240
 (1797.6) 2260
 (1812.8) 2280
 (1828) 2300
 (1842.9) 2320
 (1858.4) 2340

100 / Tr
 2229.66mMD (1776.8mTVD)
 40.80°inc 240.85°az
 100 / Tr
 2258.27mMD (1797.9mTVD)
 40.90°inc 240.47°az
 100 / Tr
 2287.74mMD (1820.2mTVD)
 40.67°inc 240.53°az
 100 / Tr
 2317.02mMD (1842.5mTVD)
 40.56°inc 241.14°az
 100 / Tr
 2346.41mMD (1864.8mTVD)
 40.56°inc 241.79°az

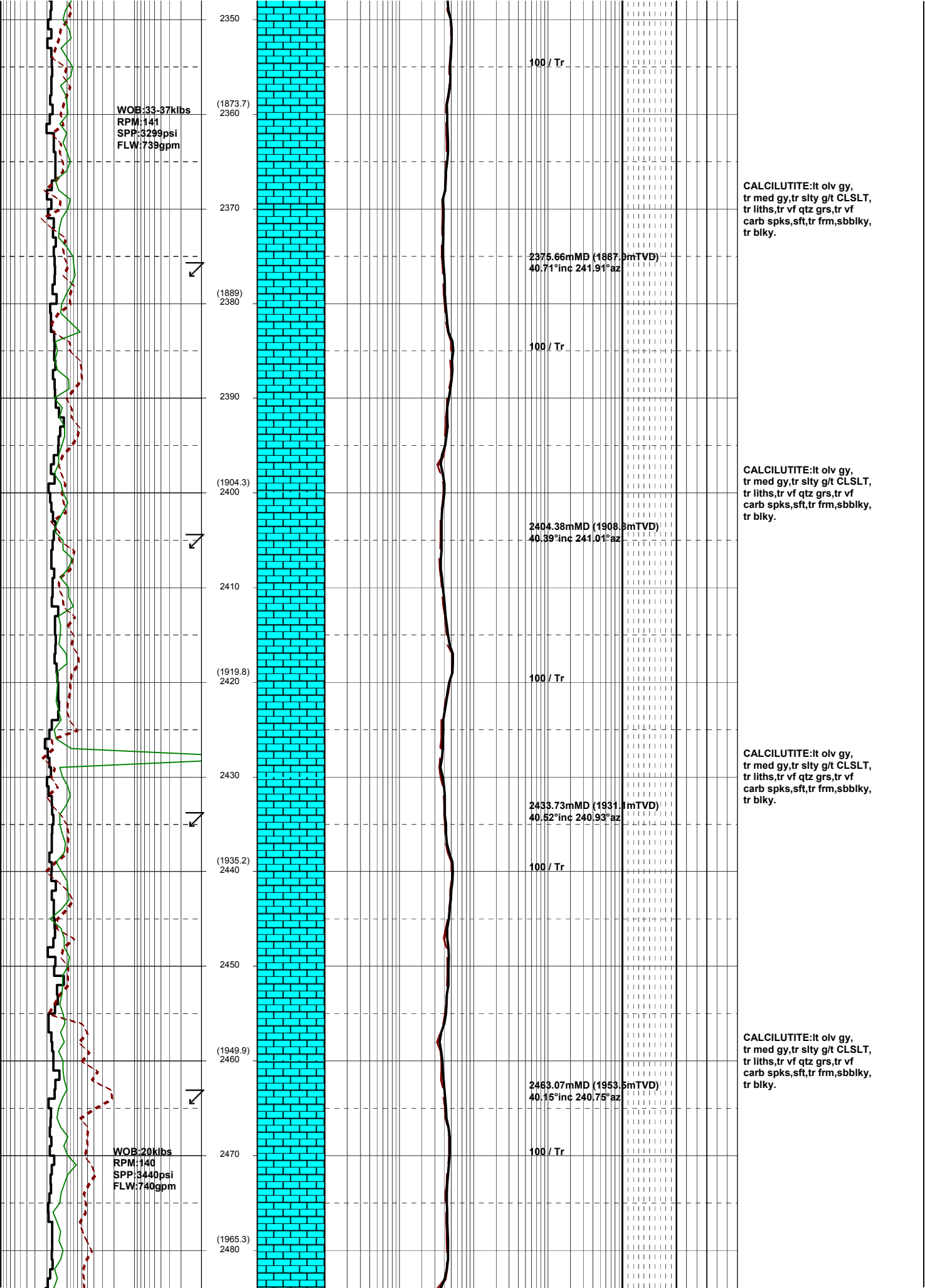
CALCILUTITE: it olv gy-med gy, tr silty g/t CLSLT, tr liths, tr vf qtz grs, tr vf carb spks, sft-frm, rr mod hd, sbbiky-blky.

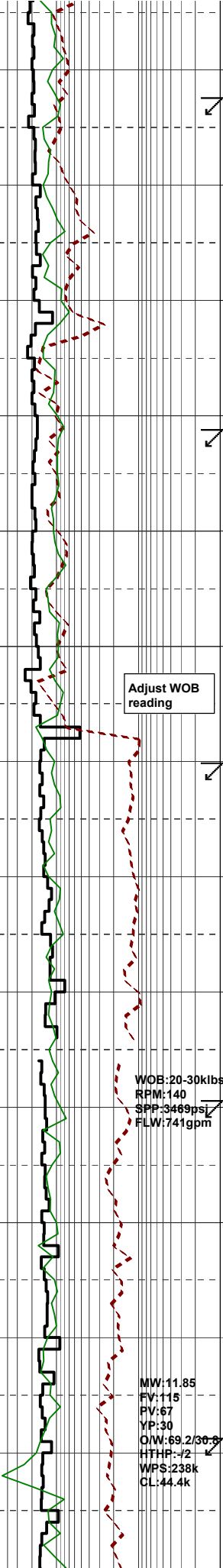
CALCILUTITE: it olv gy-med gy, tr silty g/t CLSLT, tr liths, tr vf qtz grs, tr vf carb spks, sft-frm, rr mod hd, sbbiky-blky.

CALCILUTITE: it olv gy-med gy, tr silty g/t CLSLT, tr liths, tr vf qtz grs, tr vf carb spks, sft-frm, rr mod hd, sbbiky-blky.

CALCILUTITE: it olv gy, mnr med gy, tr silty g/t CLSLT, tr liths, tr vf qtz grs, tr carb spks, sft, mnr frm, sbbiky.

CALCILUTITE: it olv gy-med gy, tr silty g/t CLSLT, tr liths, tr vf qtz grs, tr vf carb spks, sft-frm, sbbiky-blky.





2490
 (1980.8) 2500
 2510
 (1996.3) 2520
 2530
 (2011.8) 2540
 2550
 (2026.1) 2560
 2570
 (2041.3) 2580
 2590
 (2056.6) 2600
 2610
 (2071.8) 2620

Adjust WOB reading

WOB: 20-30klbs
 RPM: 140
 SPP: 3469psi
 FLW: 741gpm

MW: 11.85
 PV: 115
 YP: 67
 O/W: 69.2/36.8
 HTHP: .72
 WPS: 238k
 CL: 44.4k

2492.40mMD (1975.9mTVD)
 40.24°inc 242.60°az

100 / Tr

2521.68mMD (1998.3mTVD)
 40.18°inc 242.88°az

100 / Tr

2550.61mMD (2020.3mTVD)
 40.29°inc 242.70°az

CHECKED GZG/RESERVAL
 DEGASSER - PROBE AND
 PUMP OPPERATIONAL

CHANGE GAS LINES
 @ 2572.0 mMDRT
 LAG DEPTH

2578.89mMD (2042.7mTVD)
 40.30°inc 242.33°az

100 / Tr

2609.19mMD (2065.0mTVD)
 40.37°inc 242.40°az

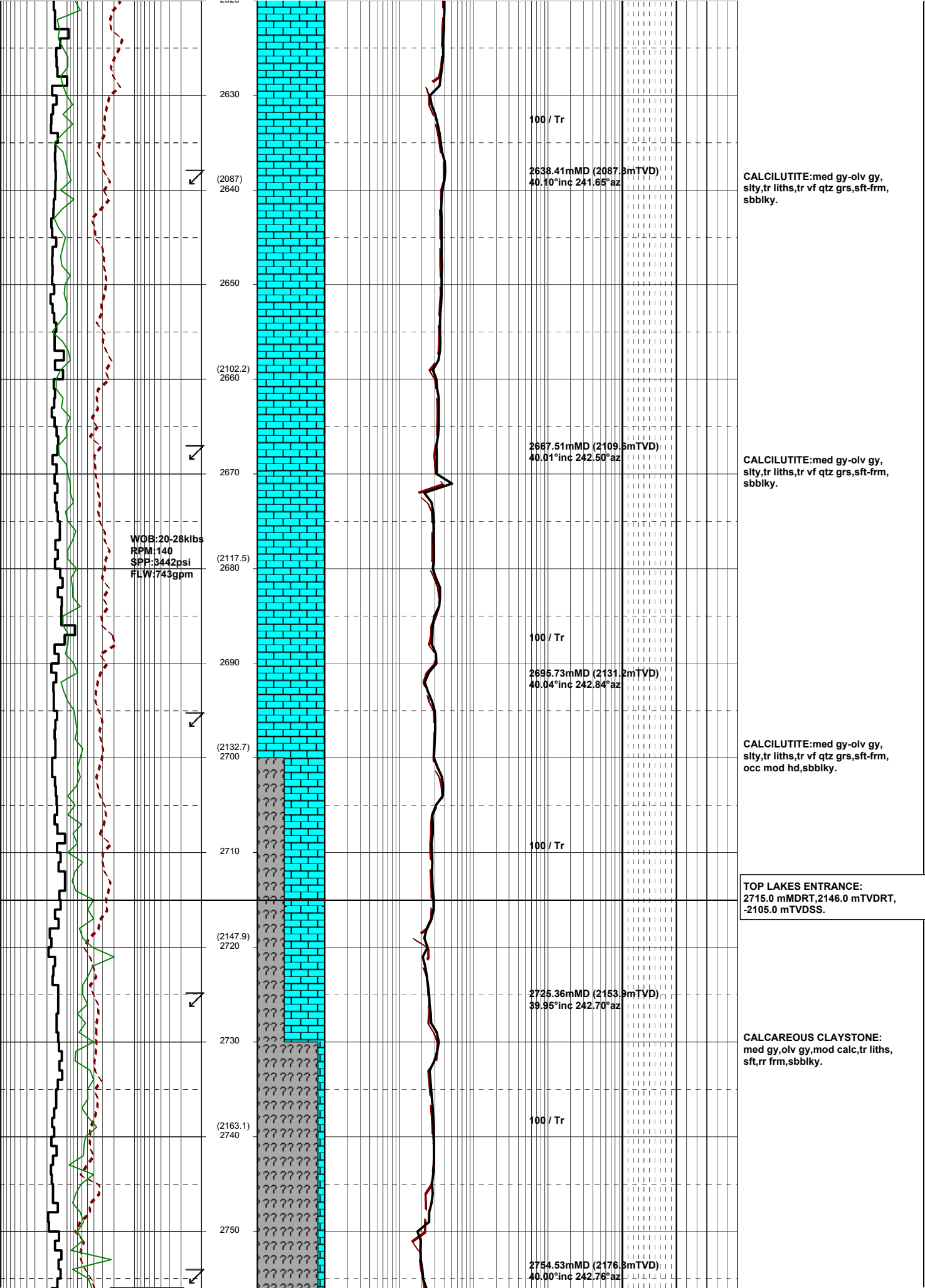
CALCILUTITE:lt olv gy,
 tr med gy,tr slty g/t CLSLT,
 tr liths,tr vf qtz grs,tr vf
 carb spks,sft,tr frm,sbbkly,
 tr blkly.

CALCILUTITE:med gy-olv gy,
 slty,tr liths,sft-frm,sbbkly.

CALCILUTITE:med gy-olv gy,
 slty,tr liths,sft,occ frm,sbbkly.

CALCILUTITE:med gy-olv gy,
 slty,tr liths,tr vf qtz grs,sft-frm,
 sbbkly.

CALCILUTITE:med gy-olv gy,
 slty,tr liths,tr vf qtz grs,sft-frm,
 sbbkly.



2630

100 / Tr

(2087)
2640

2638.41mMD (2087.3mTVD)
40.10°inc 241.65°az

CALCILUTITE:med gy-olv gy,
silty,tr liths,tr vf qtz grs,sft frm,
sbbkly.

2650

(2102.2)
2660

2687.51mMD (2109.5mTVD)
40.01°inc 242.50°az

CALCILUTITE:med gy-olv gy,
silty,tr liths,tr vf qtz grs,sft frm,
sbbkly.

WOB:20-28klbs
RPM:140
SPP:3442psi
FLW:743gpm

(2117.5)
2680

100 / Tr

2690

2695.73mMD (2131.2mTVD)
40.04°inc 242.84°az

CALCILUTITE:med gy-olv gy,
silty,tr liths,tr vf qtz grs,sft frm,
occ mod hd,sbbkly.

(2132.7)
2700

100 / Tr

2710

TOP LAKES ENTRANCE:
2715.0 mMDRT,2146.0 mTVDRT,
-2105.0 mTVDSS.

(2147.9)
2720

2725.36mMD (2153.9mTVD)
39.95°inc 242.70°az

CALCAREOUS CLAYSTONE:
med gy,olv gy,mod calc,tr liths,
sft,rr frm,sbbkly.

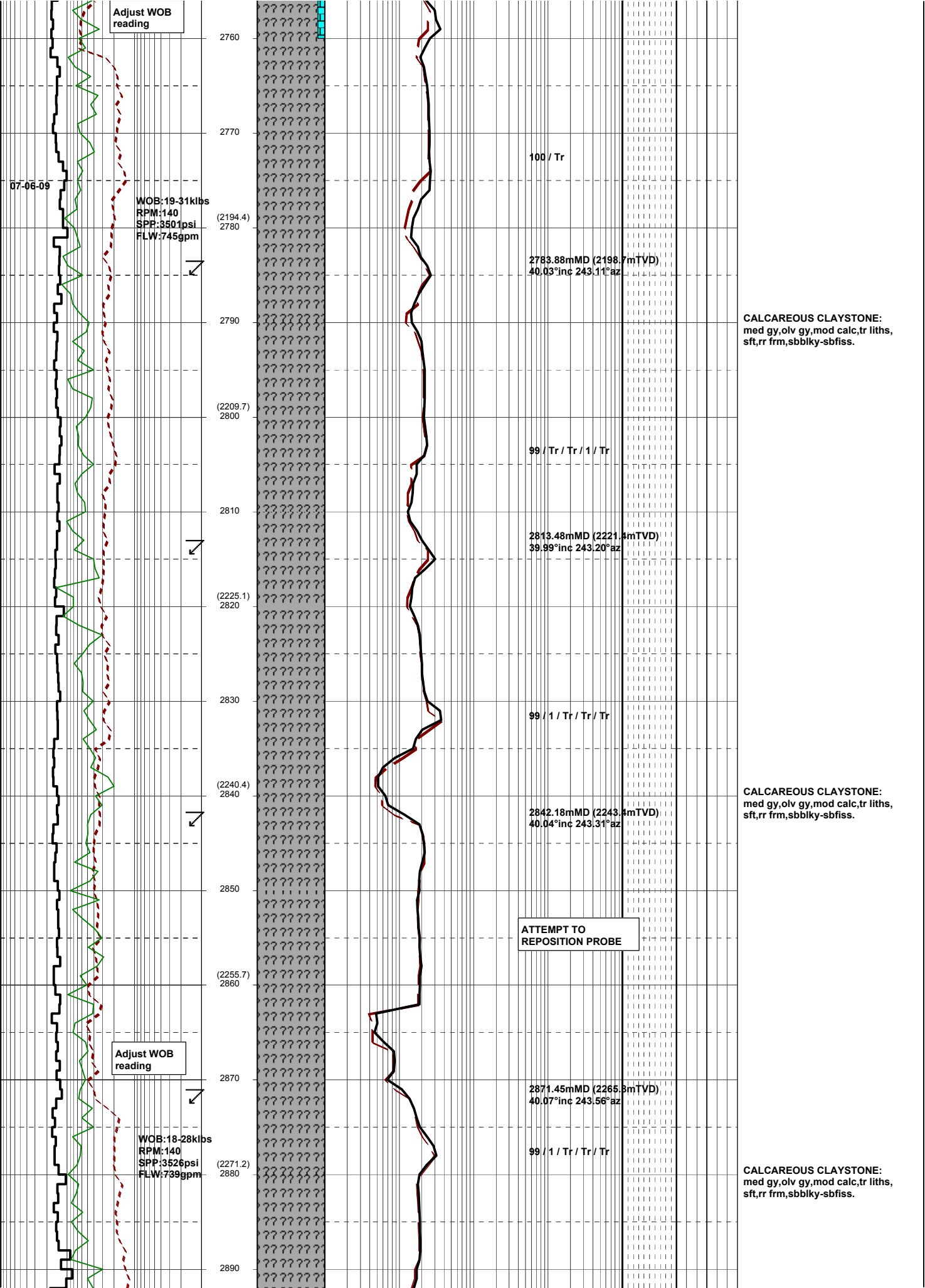
2730

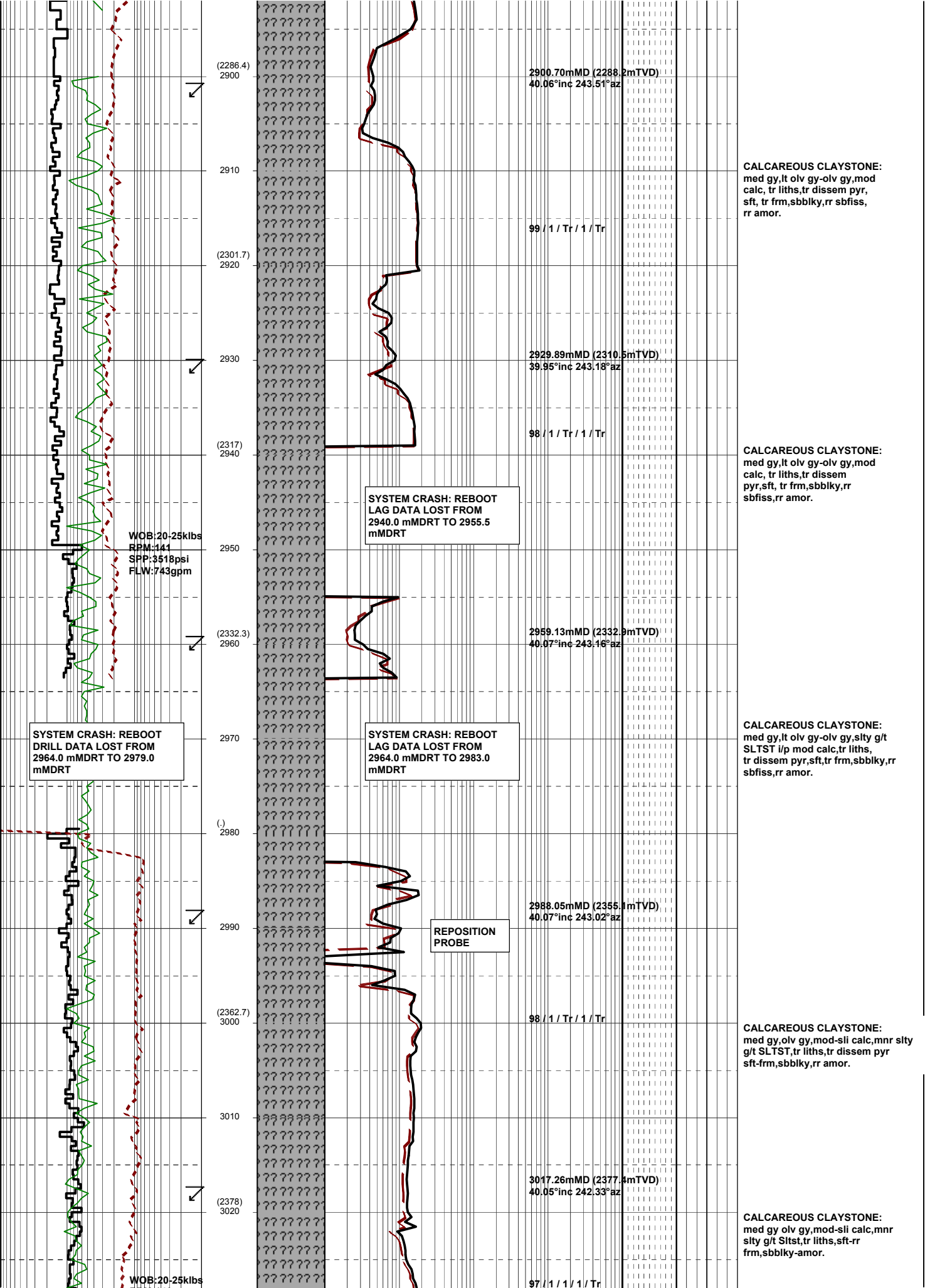
100 / Tr

(2163.1)
2740

2750

2754.53mMD (2176.3mTVD)
40.00°inc 242.76°az





RPM:140
SPP:3510psi
FLW:745gpm

3030
(2393.6)
3040
3050

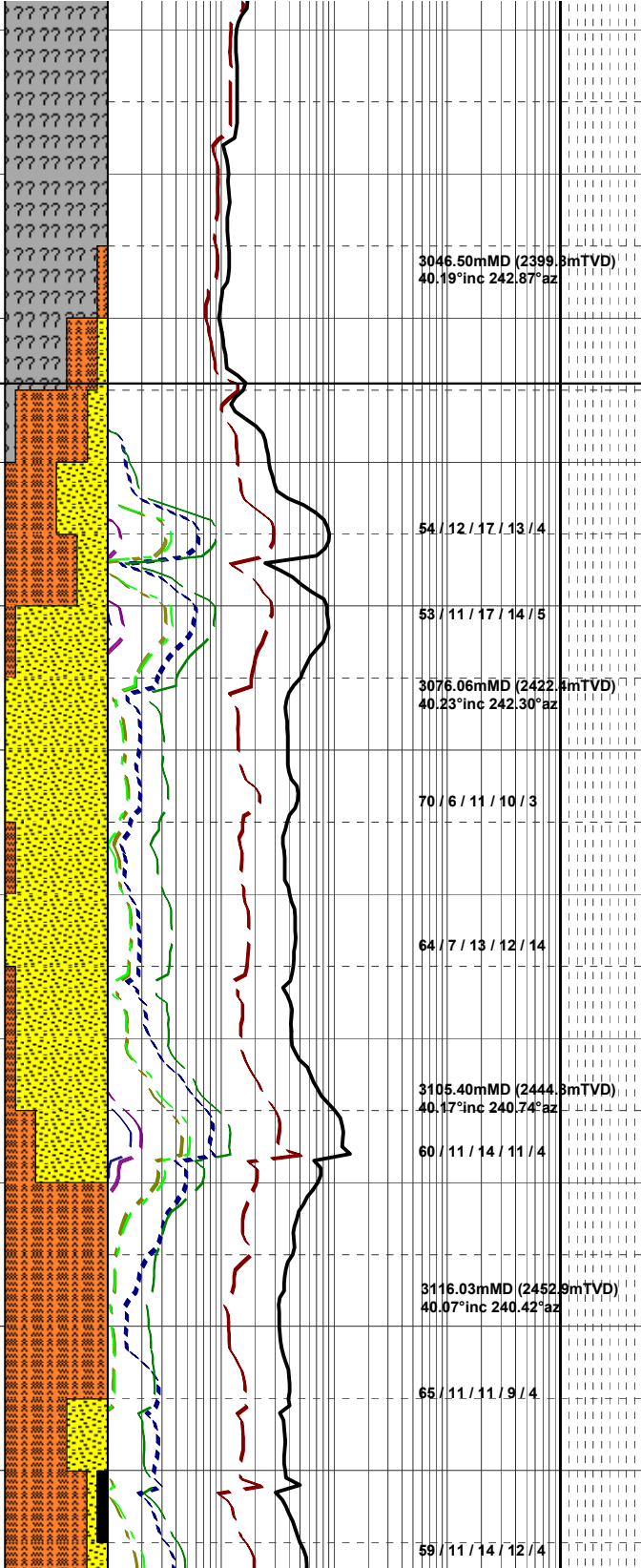
(2409)
3060
3070

(2424.3)
3080
3090

(2439.7)
3100
3110

(2454.9)
3120
3130

(2470.2)
3140
3150



DOLOMITE:bn gy,olv gy, cryptxln-xln,hd,sbbkly.

CALCAREOUS CLAYSTONE: med gy olv gy,mod-sil calc,mnr slty g/t SLTST,tr liths,tr glauc, sft-rr frm,sbbkly-amor.

SILTSTONE:med gy-med dk gy rr olv gy,aren g/t vf SST,mnr glauc grs,mnr CARB SLST,sft-frm, sbbkly.

TOP LATROBE GROUP: 3054.5 mMDRT,2406.0 mTVDR, -2365.0 mTVDSS.

SANDSTONE:it gy,opq,med gy, vf,wl srt,sa-sr,sbsph,mnr-com pl gy arg mtx,wk sil cmt,mnr liths & feld,mnr glauc,vpr vis por,no fluor.

SILTSTONE:med dk gy-dk gy, dk bn gy,aren g/t vf sst,com carb mat g/t CARB SLTST,tr liths sft-pred frm,sbbkly.

SANDSTONE:opq,trnsl,pl gy, crs-vcrs,sr,sbsph,mnr nod pyr, lse cln qtz grs,fr inf por,no fluor.

SANDSTONE:opq,trnsl,med -crs,tr vcrs,mod wl srt,sa-sr, sbsph,tr pl gy arg mtx,tr nod pyr, mnr rock flour,pred lse cln qtz grs, tr fri aggs,pr vis por,pr-fr inf por, no fluor.

SANDSTONE:opq,trnsl,pl gy f-crs,rr vcrs,pr srt,rr rnd, sbsph,loc mnr pl gy arg mtx,tr nod pyr,mnr rock flour,lse cln qtz grs,mnr fri aggs,pr vis por, pr-fr inf por,no fluor.

SANDSTONE:opq,trnsl,pl gy f-med,rr crs,mod srt,sa-sr,rr rnd, sbsph,mnr-loc com pl gy arg mtx, wk sil cmt,tr nod pyr,fri in aggs, lse i/p,pr vis por,pr-fr inf por, no fluor.

SANDSTONE:opq,trnsl,pl gy, vf-f,wl srt,sa-sr,sbsph,com pl gy arg mtx,wk sil cmt,tr carb spks, fri-rr frm,pr vis por,no fluor.

COAL:vdk gy-blk,svbit,rr ea, blkly frac,sbfiss-sbbkly

SANDSTONE:opq,trnsl,pl gy, vf-f,wl srt,sa-sr,sbsph,com pl gy arg mtx,wk sil cmt,pr med lse grs,tr carb spks,fri-rr frm,pr vis por,no fluor.

MW:11.85
FV:98
PV:65
YP:26
O/W:71.2/28
HTHF:-/2
WPS:239k
CL:41.9k

7" PRODUCTION CASING SHOE SET AT XXXX.X mMDRT.

Cobia F8A reached TD of 3137.00mMDRT (2468.95mTVDR) (-2427.95mTVDSS) at 11:15 hrs on 07/06/2009

Projection to TD 3137.00mMDRT (2468.95mTVDR) 40.00°inc 240.50°az